



STANDARDS REQUIRED FOR SAFETY & SECURITY OF ARMY PERSONNEL



OPERATING ENVIRONMENT



**EN ACTION
INDIA & ABROAD**



NATURAL DISASTERS



**TRN FRICTION (JUNGLES,
RIVERS, DESERTS, SHAA)**



**DIVERSE RANGE OF OPS (AIR,
NBC, AMPHIBIOUS, SHAA)**



**EXTREME WEATHER (DESERTS
TO GLACIER + 50 C TO -50 C)**



ANY DILUTION OF SAFETY & SECURITY STANDARDS UNACCEPTABLE



12/01/16











***“ THE LAND IS SO BARREN AND THE
PASSES SO HIGH THAT ONLY THE
FIERCEST ENEMIES AND THE BEST OF
FRIENDS WOULD COME VISITING ”***





AIM



- **TO ACQUAINT THE INDUSTRY WITH SAFETY & SECURITY STANDARDS OF TEXTILES FOR THE ARMY**

BUDGETARY ESTIMATES

Expenditure on procurement of Ordnance items – Rs 14,000 Crores

Approx 22% - Rs 3,000 Crores for Clothing & General Stores

Offload 48 principle items - Ordnance Factory Board to Trade

Boost to domestic Industry & impetus to 'Make in India'



TYPES OF CLOTHING ITEMS

SPECIAL CLOTHING & MOUNTAINEERING EQUIPMENT (SCME) :

- APPROX STRENGTH - 40,000
- 58 x ITEMS, Cat I – 21 → & Cat II – 37 ITEMS →
- ABOVE 12,000 FT
- GLACIATED TRN
- MINUS 30 TO MINUS 50° C
- HIGH WIND CHILL FACTOR (40 KM/HR)

EXTREME COLD CLOTHING (ECC)

- APPROX STRENGTH – 6 LAKHS
- 30 x ITEMS, Cat I – 13 → & Cat II – 17 ITEMS →
- BETWEEN 6000 – 12,000 FT
- PLUS 10 TO MINUS 10° C





TYPES OF CLOTHING ITEMS



- LIFE CYCLE CLOTHING (LCC)
 - APPROX STRENGTH – 12 LAKHS
 - 37 + 5 x ICK ITEMS
 - NORMAL USE ITEMS
- PROTECTIVE EQPT
 - BPJs , BALLISTIC HELMETS , ELBOW & KNEE PADS
- TENTS (NORMAL / ARCTIC)
- SDE
- MEDICAL TEXTILES





EXAMPLES OF SCME ITEMS



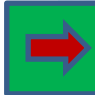
- **Multi layered Extreme Cold Weather Clothing System (ECWCS)**
- **JD TD**
- **Sleeping Bags**
- **Socks Wollen Spl Two Layer**
- **Modular Gloves (three layers)**
- **High Quality Mountaineering Eqpt : Slithering ropes, Ice Axe, Pitons, Carabiners etc**
- **Avalanche Survival Eqpt : Full Safe, Tugger etc**
- **Under Slung Cargo Nets**





STANDARDS REQUIRED FOR SOCKS **WOLLEN (TWO LAYER) : SHAA**



- Meant for extreme cold / widest rg of climatic condition upto minus 50 C 
- Should regulate body temp to keep warm in the winter and cool in the summer
- Should absorb & evaporate moisture in the vapour state keeping feet dry
- Should prevent moisture build up, bacteria growth & odour
- Tech Details viz bursting str, composition, colour fastness, No of needles used, fineness of wool grade, pH of aqueous extract etc spelt out in detail

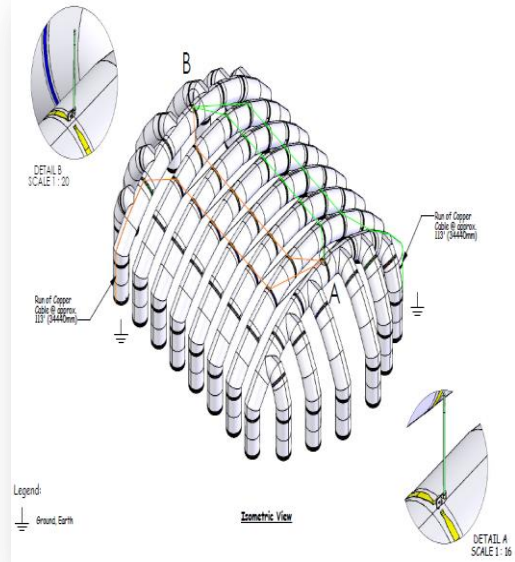
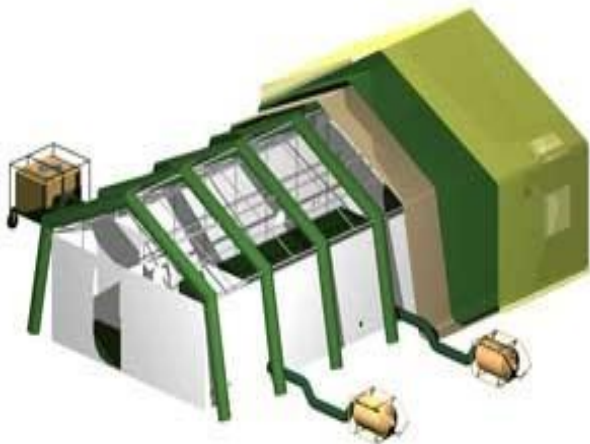




Collective Protection, Tentage & Load Carrying Fabrics



- Under slung carriage ropes
- Buildtech & latest tentage techniques
- **Semi permanent living**
- Fire resistant tents, Parachutes, NBC Protection & Synthetic Camouflage Nets





BUILDTECH FABRICS **(E-in-C Br)**



Architectural Membranes

Concrete Canvas

Tarpaulins

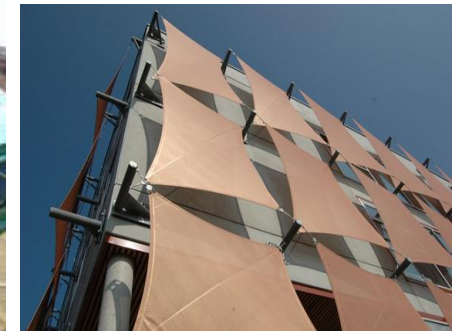
Awnings and Canopies

Floor & Wall Coverings

Scaffolding Nets

Fibre Reinforced Concrete (earthquake proof & faster construction)

Signages



Bunkers, Drains, Retaining Walls, A/Tk Barriers

MEDICAL TEXTILES AND PROTECTIVE CLOTHING (DGMS DTE)

- **Bandages - Blood Clot (Life Saving)**
- **Lightweight Stretchers**
- **Healthcare & Hygiene Products**
- **Extracorporeal**





GEO & BUILDING TEXTILES

(E-in-C Br)



- **Expansion due to Heavy Requirement**
- **Poor condition of Roads in remote areas**
- **Threat of Landslides**
- **Geo Textiles for prevention of landslides by Border Roads Organization**
- **Road & Track Building Material**



BRO and Combat Engineers for Roads, Bridges, Tunnels, Helipads, Air Fields, Drains & Canals





FRAMING OF STANDARDS & PROCUREMENT





FRAMING OF STDS



Iden of PI /New Eqpt



Defining user reqmts(GSQR
/ Draft Specifications)



RFI / Vendor Interaction



User trials as per Trial
Directives(Sample on NCNC)



Selection of product &
finalization of specifications



(Mil Specs-DGQA/Normal
Items - Proc Agency)



Procurement



PROCUREMENT CYCLE



Request for Proposal (RFP)



Pre Bid meeting (Maj Procurements Only)



Bid Submission and Opening



Tech Evaluation of Bid : User trials & formulation of Tech Specs by DGQA (Lab tests if required)



Commercial Bid Opening and Cost Negotiation



Placing of Supply Order - 80 : 20 for expanding vendor base, STE / LTE : GTE, Apportionment



Time Bound Delivery under QA Cover

WAY AHEAD

RECENT DEVELOPMENTS	KEY FOCUS AREAS	ENABLERS
<ul style="list-style-type: none">➤ Procurement Manuals DPP & DPM available on net➤ Off loading 48 Non Core items from OFB to Trade➤ Simplification of Spec formulation and Contracts➤ 3rd ITTA Seminar : 23 - 24 May 17 at New Delhi➤ Regular Vendor Interactions / RFI - for Product Improvement	<ul style="list-style-type: none">➤ Transparent Proc Procedures - e-proc➤ 'Make in India', JVs, R & D & Product Improvement➤ Level playing field vis-a-vis foreign players➤ Facilitate Make in India : 80:20, STE / LTE : GTE, Apportionment, Shift mfr base➤ Close interface between the Services and Industry	<ul style="list-style-type: none">➤ Make in India➤ GeM➤ Ease of Doing Business➤ Joint Ventures➤ FDI infusion - Technology transfer➤ Enhanced interactions between Armed Forces & Industry➤ Improved R&D Facilities➤ Transparent e-proc Procedures



CONCLUSION



- **Intro of Technical Textiles into the Army –
Need of the hour**
- **Enhanced Comfort level & Combat efficiency**
- **Formulation of Standards & QA**
- **Ensure High Stds of safety & security**
- **Cooperation - Armed Forces & Industry ; Win
: Win Situation**



CONTACT DETAILS



- **CDs WITH TECH SPECS FOR IA GIVEN TO THE ORGANISERS**

- **Col P Acharya**

Dir EM (Special Clothing)

Room No 206, A Wing Sena Bhawan

New Delhi-110011

Ph No 011-23015934

Fax- 011-23015934

Email- diremgsc-mod@nic.in

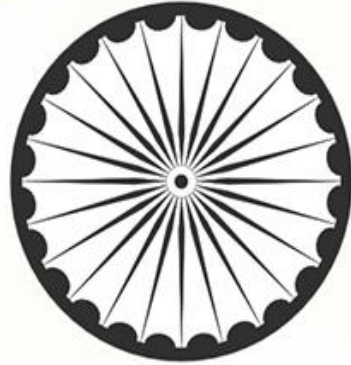
Col Soumit Pattnaik

Dir GS&C

Room No 623, A Wing Sena Bhawan

Ph No and Fax 011-23018894

Email- diremgsc-mod@nic.in



JAI HIND